

# CIRCULAR KNIVES. COLLARS.

Type FN (plain bore), FG (eccentric ring fixing), FS (screw fixing),  
FR (multilocking)

Outer-Ø (knife) (d1) mm	Inner-Ø (knife carrier) (d2) mm	Knife seat (d3) mm
62	25	40
75	30 / 40	45 / 50
100	45 / 60	65 / 70 / 75
105	45 / 60	65 / 70 / 75
130	60 / 80	100
150	100	120

Standard thickness (S): 5 / 10 / 15 / 20 mm

Other dimensions and materials on request.

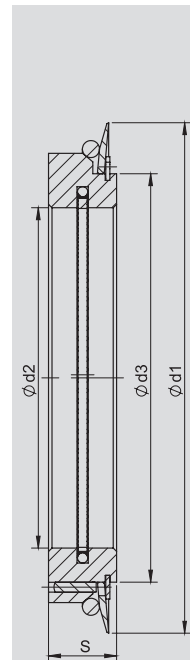
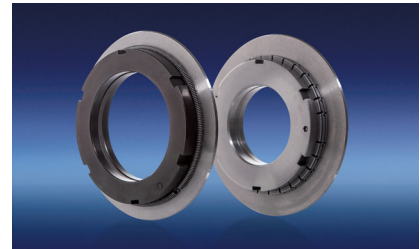
### Standard materials:

chrome alloyed tool steel (1.5 % Cr)

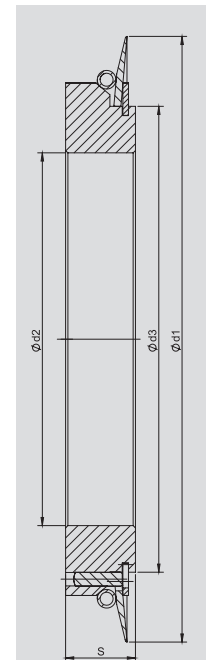
### Benefits:

- | exact production tolerances
- | different surface coatings for your applications
- | suitable for different knife types
- | suitable for various machine types
- | with various fixing methods
- | designs for the use in automatic knife positioning systems

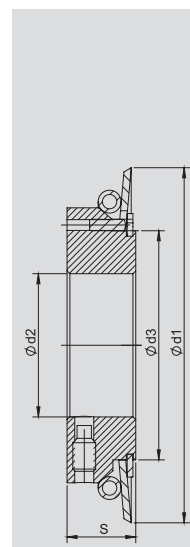
DIENES also manufactures suitable dished knives, top knives (flat) and bottom knives.



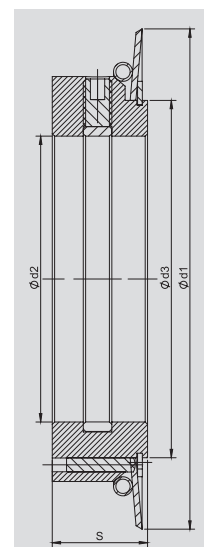
FG



FN



FS



FR